

ANEMOMETERS see Meteorology section

AQUARIA

The aquaria featured in this catalogue are suitable for both fresh and salt water.

Dimensions and capacities are approximate.

TRANSPARENT PLASTIC AQUARIUM

C10-3520 305 x 200 x 200mm (l x w x h), capacity 12L

GLASS AQUARIA, Complete Kits

The following starter kits are ideal for setting up an aquarium. The aquaria are both glass with close-fitting condensation proof hood, featuring a fully integrated fluorescent lighting unit and hinged front flap giving easy access for feeding and maintenance. For 220 - 240V a.c. single phase supplies.

AQUARIUM KIT

Aquarium 60 x 30 x 35cm (24" x 12" x 14") with hood and fluorescent light bulb; combined pump and filter unit; thermal compact heater; digital thermometer; fish food; water conditioner solutions (remove harmful chlorine and chloroamides from tap water and helps prevent/heal injuries to the fish); carbon & polyester filter pads; plastic plants; aquarium guide book. (Contents may vary subject to availability)

C10-3630 Aquarium Kit

ADVANCED AQUARIUM KIT

Aquarium 80 x 30 x 40cm (32" x 12" x 16") with hood and fluorescent light bulb; combined pump and filter unit; thermal compact heater; digital thermometer; fish food; water conditioner solutions (remove harmful chlorine and chloroamides from tap water and helps prevent/heal injuries to the fish); carbon & polyester filter pads; plastic plants; aquarium guide book. (Contents may vary subject to availability)

C10-3690 Advanced Aquarium Kit

AQUARIUM ACCESSORIES

NET

7.5cm diameter nylon net, with 20cm plastic coated wire handle

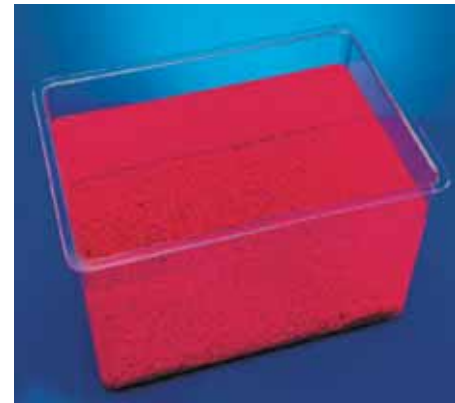
C10-4000 Net

AIR PUMPS

Provides an extra supply of air for use with under gravel filters, airstones, etc. For 220 - 240V a.c. single phase supplies.

C10-4520 Air pump, for aquaria up to 75 litre/16 gal

C10-4550 Air pump, for aquaria up to 134 litre/29 gal



C10-3520



C10-3630



C10-4520



C10-4550