

FARADAY'S DISC

Comprises a large disc with rotating handle on a pillar which is mounted on a base, approx. 175 x 100mm. A second pillar, for mounting the three horseshoe magnets supplied, is positioned on one side of the base such that the disc can be rotated between the limbs of the magnets. 4mm holes are provided for connection to a galvanometer.

P65-1000 Faraday's Disc

MOTOR/DYNAMO MODEL

Comprises a pulley with a rotating handle, motor/dynamo, M.E.S. lampholder and bulb, and two 4mm sockets for external connections to a meter or oscilloscope. Mounted on a base 90 x 175mm.

P65-1500 Motor/Dynamo Model

Spares

For spare bulb - see **P56-9000**

BICYCLE DYNAMO

Mounted on a wood base, 200 x 115 x 12mm, the apparatus consists of two sets of gears driven by a hand crank for fast or slow rotation. Two 4mm socket terminals are provided for the dynamo output, connected in parallel with an M.E.S lamp holder and 2.5V bulb.

P65-1550 Bicycle Dynamo

ELECTRIC MOTOR KIT

Six motors can be made from each kit, based on the Westminster kit. The set comprises: 6 support bases, 6 armatures, 12 Magnadur magnets, 6 mild steel yokes, 6 knitting needle shafts, 24 rivets, 12 split pins, 1 reel of 26 s.w.g. p.v.c. covered copper wire, 1 reel of sellotape and a length of rubber tubing. For 'spare parts' see Westminster Electromagnetic kit, **P63-1000**.

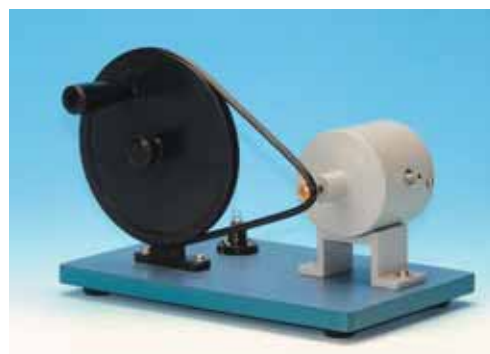
P65-2000 Electric Motor Kit



P65-1000



P65-1500



P65-1550



P65-2000